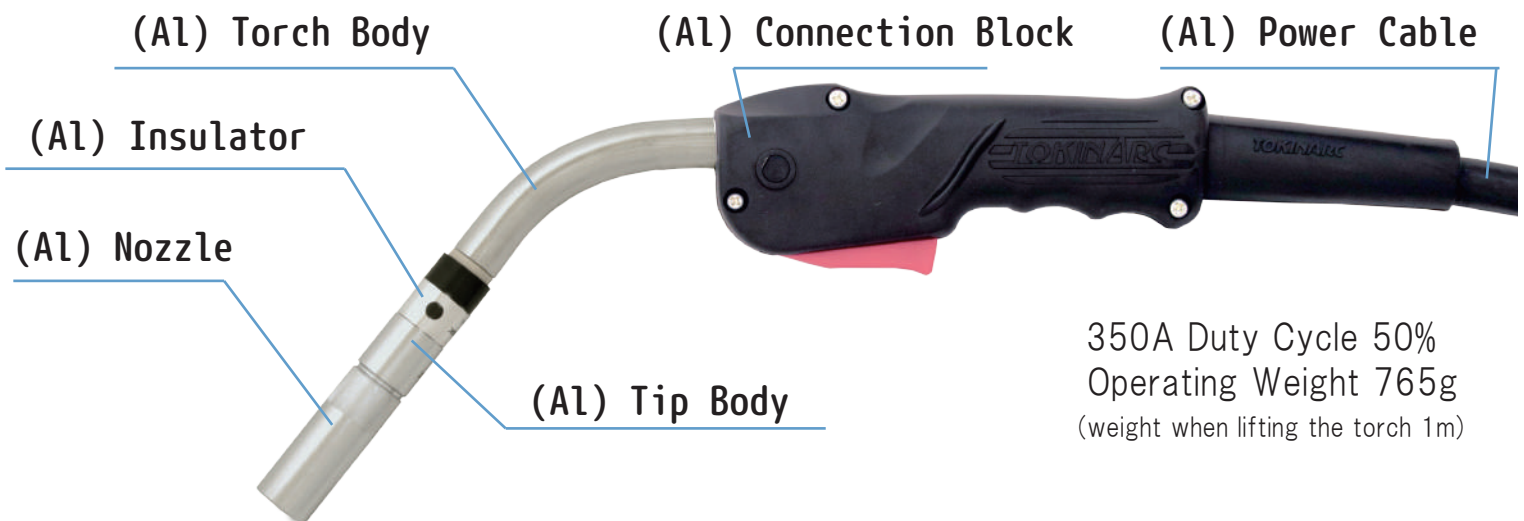


## 350A All Aluminum Semi-Automatic Torch

# CSHA-35



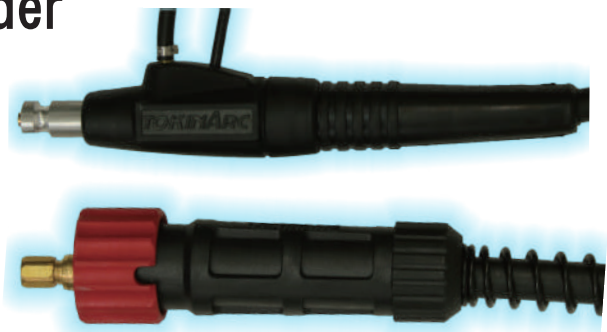
## Fatigue Reduction Torches

- Full-scale weight reduction greatly reduces burden to the operator.
- Precision handling realized through optimized torch front and rear holding balance.

## Direct Connection to Wire Feeder

P Type (Panasonic Connection)  
CSHA-35-P-3m/4.5m/6m  
(Cable Length)

D Type (Daihen Connection)  
CSHA-35-D-3m/4.5m/6m  
(Cable Length)

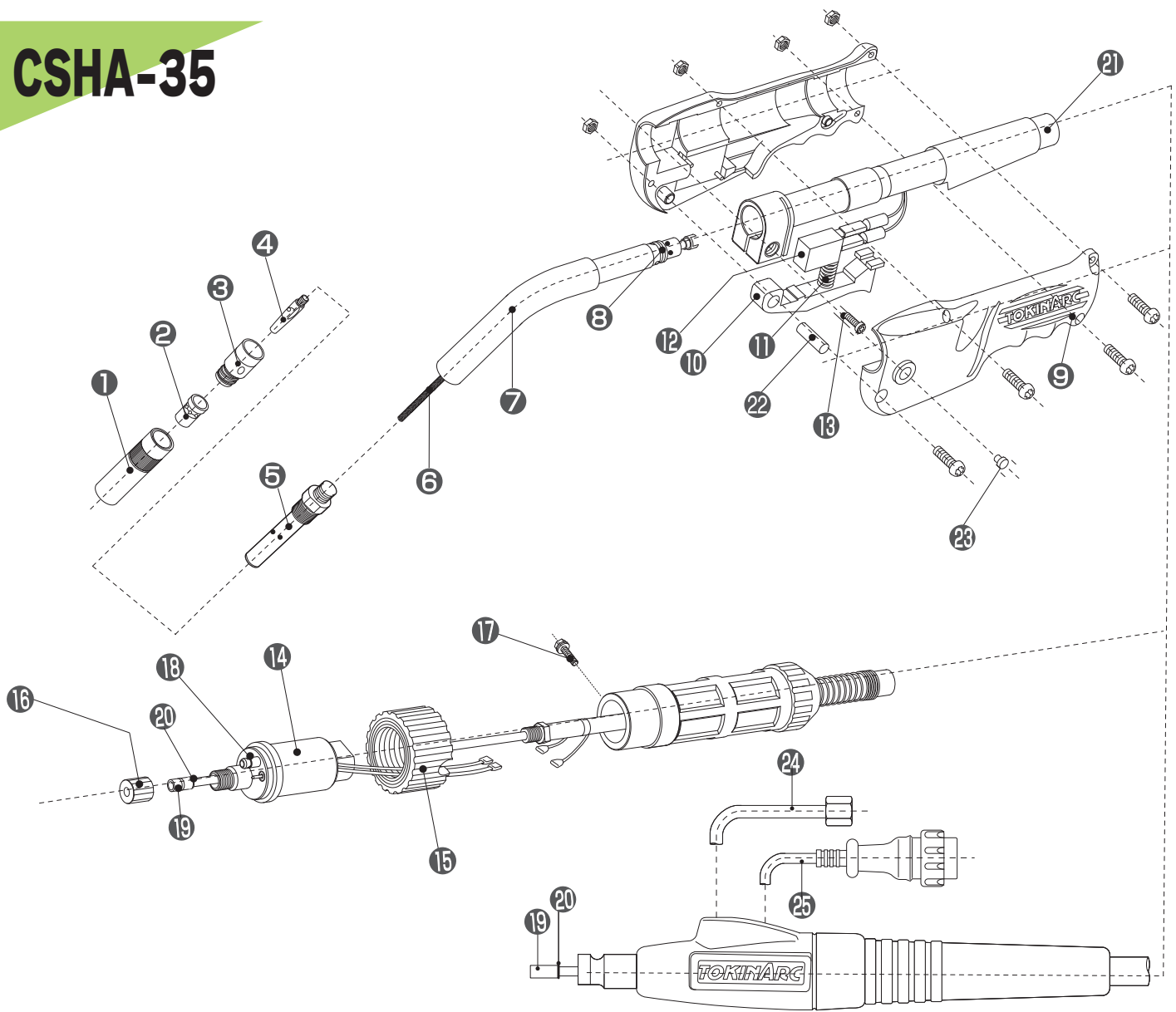


## Order Notations

Model		CSHA-35
Rated Current	A	350
Duty Cycle	% (CO <sub>2</sub> )	50
	% (MAG)	35
Applicable Wire Diameter	mm	(0.9,1.0)1.2
Cable Length	m	3 / 4.5 / 6
Cooling Method		Air Cooled
Total Weight (when cable is 3m)	kg	1.86

Part Number	Model
05731A-3000	CSHA-35-P-3
05731A-4500	CSHA-35-P-4.5
05731A-6000	CSHA-35-P-6
05732A-3000	CSHA-35-D-3
05732A-4500	CSHA-35-D-4.5
05732A-6000	CSHA-35-D-6

# CSHA-35



Part Number Part Name

①	016 17A	CSHA-35 N Aluminum Nozzle 16mm *
	001 002	N Nozzle 16mm
	001 003	N Nozzle 12mm
	001 008	N Nozzle 18mm
	001 009	N Thick Nozzle
	001 004	N Small-Diameter Long Nozzle
②	003 002	N Orifice S
③	016 48A	N (Al) Insulator S *
	004 002	N Insulator S
④	002 002	N Tip 1.0mm
	002 003	N Tip 1.2mm
	002 008	N Small-Diameter Long Tip 1.0mm
	002 009	N Small-Diameter Long Tip 1.2mm
⑤	016 10A	CSHA (Al) Tip Body A *
	036 001	CS Tip Body A
⑥	036 011	CSH-35 Inner Tube

Part Number Part Name

⑦	016 15A	CSHA (Al) Torch Body Only *
	036 022	CSH-35 Torch Body Only
	038 004	CSH-35K Torch Body Only
	038 024	CSH-35F Torch Body Only
	036 051	CSH-35G Torch Body Only
⑧	036 030	O Ring S-9 (CSH Torch Body)
⑨	072 005	CSH Handle
⑩	070 002	CSH Switch Lever
⑪	032 016	CSH Spring
⑫	032 013	CSH Micro Switch with Rubber Cover
⑬	036 033	CSH Clamping Bolt
⑭	020 001	Electric Supply Adapter
⑮	020 002	Adapter Nut
⑯	020 003	Liner Nut

Standard composition parts (when the cable length is 3m).

Part Number Part Name

⑰	020 004	Set Screw
⑱	020 005	Adapter "O" Ring
⑲	037 003	CSH Liner 3m 1.0-1.2mm
	037 046	CSH Liner 4.5m 1.2mm
	037 006	CSH Liner 6.0m 1.2mm
⑳	036 035	Liner O Ring (S-4)
㉑	05992A-3000	CSH-35 (Al) Power Cable 3.0m *
	05992A-4500	CSH-35 (Al) Power Cable 4.5m *
	05992A-6000	CSH-35 (Al) Power Cable 6.0m *
㉒	072 008	CSH Switch Lever Pin
㉓	072 019	CSH Insulation Cover
㉔	032 058	CS Gas Hose N,D
㉕	032 052	CS Switch Plug N,D

The end consumables are interchangeable with CSH-35.

\* CSH-35 (nozzle, torch body, power cable) are exclusive made of (Al) parts.



**TOKIN CORPORATION**  
www.tokinarc.co.jp

1509 Okubo-cho, Nishi-ku, Hamamatsu-shi,  
Shizuoka Japan 432-8006

TEL : +81-53-485-5252 FAX : +81-53-485-5680  
E-mail : trading@tokinarc.co.jp

2020.10