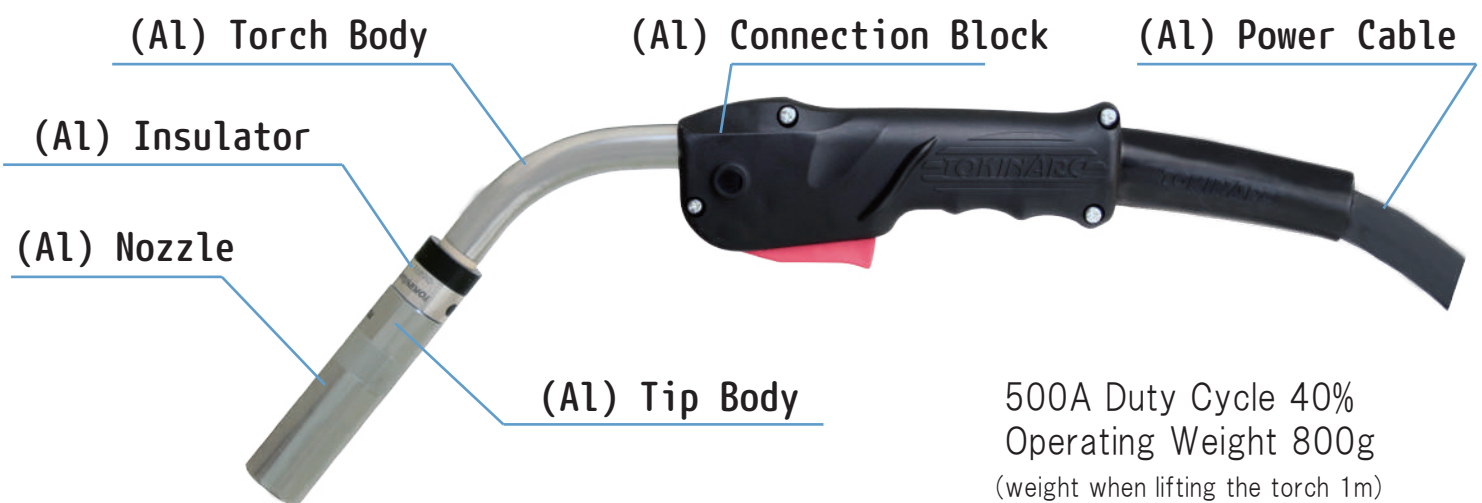


500A All Aluminum Semi-Automatic Torch

CSHA-50



Fatigue Reduction Torches

- Full-scale weight reduction greatly reduces burden to the operator.
- Precision handling realized through optimized torch front and rear holding balance.

Direct Connection to Wire Feeder

P Type (Panasonic Connection)
CSHA-50-P-3m/4.5m/6m
(Cable Length)

D Type (Daihen Connection)
CSHA-50-D-3m/4.5m/6m
(Cable Length)

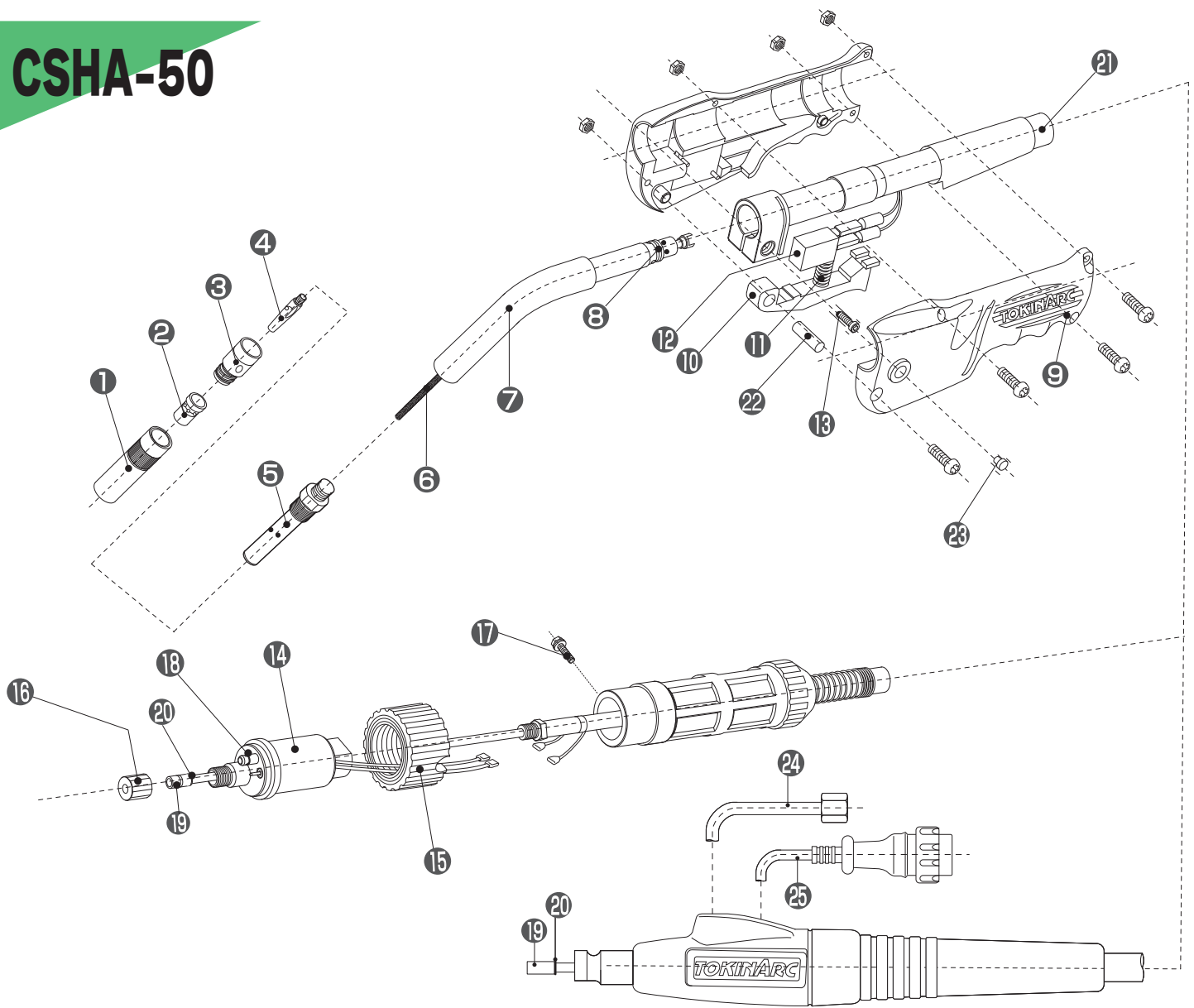


Order Notations

Model		CSHA-50
Rated Current	A	500
Duty Cycle	%(CO ₂)	40
	%(MAG)	30
Applicable Wire Diameter	mm	1.2,1.4,1.6
Cable Length	m	3 /4.5/6
Cooling Method		Air Cooled
Total Weight (when cable is 3m)	kg	2.20

Part Number	Model
05906A-3000	CSHA-50-P-3
05906A-4500	CSHA-50-P-4.5
05906A-6000	CSHA-50-P-6
05907A-3000	CSHA-50-D-3
05907A-4500	CSHA-50-D-4.5
05907A-6000	CSHA-50-D-6

CSHA-50



Part Number	Part Name
① 016 38A	CSHA N (Al) Nozzle 19mm *
001 001	N Nozzle 19mm 500A
001 010	N Nozzle 16mm 500A
001 005	N Nozzle 13mm 500A
001 012	N Nozzle 19mm 500A L=84mm
001 015	N Nozzle 19mm 500A L=84mm
② 003 001	N Orifice L
③ 016 49A	N (Al) Insulator L *
004 001	N Insulator L
④ 002 003	N Tip 1.2mm
002 017	N Tip 1.4mm
002 004	N Tip 1.6mm
⑤ 016 39A	CSHA (Al) Tip Body B *
036 002	CS Tip Body B
⑥ 036 011	CSH-50 Inner Tube
038 024	CSH-50F Inner Tube
050 302	CSH-50L Inner Tube

Part Number	Part Name
⑦ 016 15A	CSHA (Al) Torch Body *
036 022	CSH-50 Torch Body Only
038 024	CSH-50F Torch Body Only
050 302	CSH-50L Torch Body Only
⑧ 036 030	O Ring S-9 (CSH Torch Body)
⑨ 072 005	CSH Handle
⑩ 070 002	CSH Switch Lever
⑪ 032 016	CSH Spring
⑫ 032 013	CSH Micro Switch with Rubber Cover
⑬ 036 033	CSH Clamping Bolt
⑭ 020 001	Electric Supply Adapter
⑮ 020 002	Adapter Nut
⑯ 020 003	Liner Nut
⑰ 020 004	Set Screw
⑱ 020 005	Adapter "O" Ring

Standard composition parts
(when the cable length is 3m).

Part Number	Part Name
⑲ 037 044	CSH Liner 3m 1.2-1.6mm
037 047	CSH Liner 4.5m 1.2-1.6mm
037 041	CSH Liner 6.0m 1.2-1.6mm
⑳ 036 035	Liner O Ring (S-4)
⑳ 05995A-3000	CSH-50 (Al) Power Cable 3.0m *
㉑ 05995A-4500	CSH-50 (Al) Power Cable 4.5m *
05995A-6000	CSH-50 (Al) Power Cable 6.0m *
㉒ 072 008	CSH Switch Lever Pin
㉓ 072 019	CSH Insulation Cover
㉔ 032 058	CS Gas Hose N,D
㉕ 032 052	CS Switch Plug N,D

The end consumables are interchangeable with CSH-50.

* CSH-50 (nozzle, torch body, power cable) are exclusive made of (Al) parts.



TOKIN CORPORATION
www.tokinarc.co.jp

1509 Okubo-cho, Nishi-ku, Hamamatsu-shi,
Shizuoka Japan 432-8006

TEL : +81-53-485-5252 FAX : +81-53-485-5680
E-mail : trading@tokinarc.co.jp