

Maximum Aluminum-ification

Ultralightweight All Aluminum Semi-Automatic Torch

TLA-20



Fatigue Reduction Torches

- Full-scale weight reduction greatly reduces burden to the operator.
- Precision handling realized through optimized torch front and rear holding balance.

Direct Connection to Wire Feeder

P Type (Panasonic Connection)

TLA-20-P-3m/4m
(Cable Length)



D Type (Daihen Connection)

TLA-20-D-3m/4m
(Cable Length)

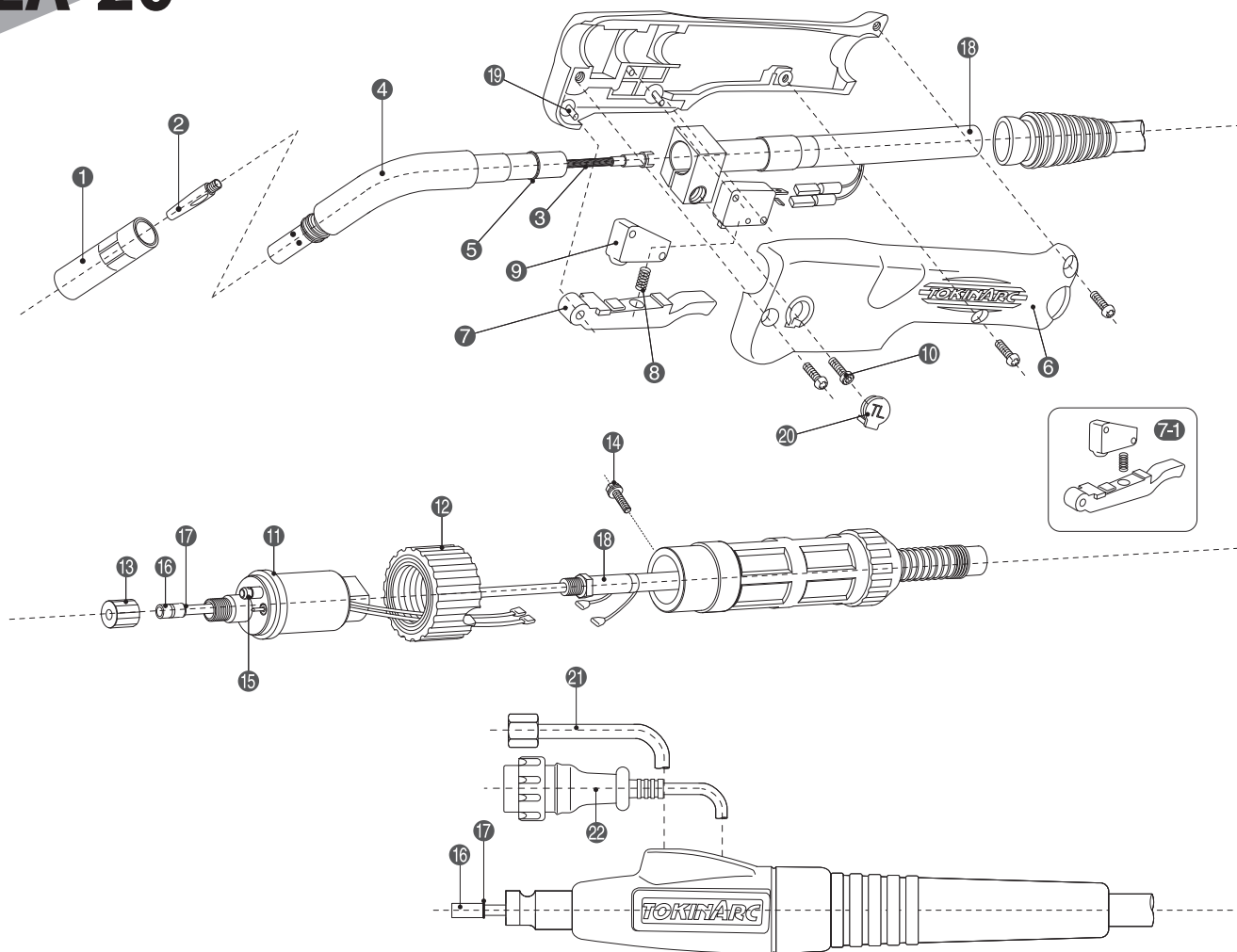


Model		TLA-20
Rated Current	A	200
Duty Cycle	% (CO ₂)	40
	% (MAG)	20
Applicable Wire Diameter	mm	(1.0)1.2
Cable Length	m	3 / 4
Cooling Method		Air Cooled
Total Weight	kg	1.70

Order Notations

Part Number	Model
05727A-3000	TLA-20-P-3
05727A-4000	TLA-20-P-4
05728A-3000	TLA-20-D-3
05728A-4000	TLA-20-D-4

TLA-20



Part Number Part Name

①	05735A	TLA-20 Aluminum Nozzle 16mm *
	038 040	TL-20 Nozzle 13mm
	038 041	TL-20 Straight Nozzle
	038 042	TL-20 Long Nozzle
②	002 002	N Tip 1.0mm
	002 003	N Tip 1.2mm
	002 008	N Small-Diameter Long Tip 1.0mm
	002 009	N Small-Diameter Long Tip 1.2mm
③	038 053	TL-20 Inner Tube
④	05737A	TLA-20 Aluminum Torch Body *
⑤	038 055	TL-Torch Body "O" Ring (P-8)
⑥	077 091	TL Handle
⑦	072 003	TL Switch Lever
7-1	077 092	TL Long Switch Lever
⑧	032 016	TL Spring
⑨	032 013	TL Micro Switch with Rubber Cover
⑩	020 123	TL Clamping Bolt

Part Number Part Name

⑪	020 001	Power Supply Adapter
⑫	020 002	Adapter Nut
⑬	020 003	Liner Nut
⑭	020 004	Set Screw
⑮	020 005	Adapter "O" Ring
⑯	037 003	TLA-20 Liner 3m 1.0-1.2mm
	037 004	TLA-20 Liner 4m 1.0-1.2mm
⑰	036 035	Liner O Ring (S-4)
⑱	05741A	TLA-20-D Aluminum Power Cable 3.0m *
	05742A	TLA-20-D Aluminum Power Cable 4.0m *
⑲	072 021	TL Switch Lever Pin
⑳	077 093	TL Insulation Rubber
㉑	032 058	CS Gas Hose N,D
㉒	032 052	CS Switch Plug N,D

Standard composition parts (when the cable length is 3m).

• The end consumables are interchangeable with TL-20.

* TLA-20 (nozzle, torch body, power cable) are exclusive made of aluminum parts.



TOKIN CORPORATION
www.tokinarc.co.jp

1509 Okubo-cho, Nishi-ku, Hamamatsu-shi,
Shizuoka Japan 432-8006

TEL : +81-53-485-5252 FAX : +81-53-485-5680
E-mail : trading@tokinarc.co.jp

2020.08